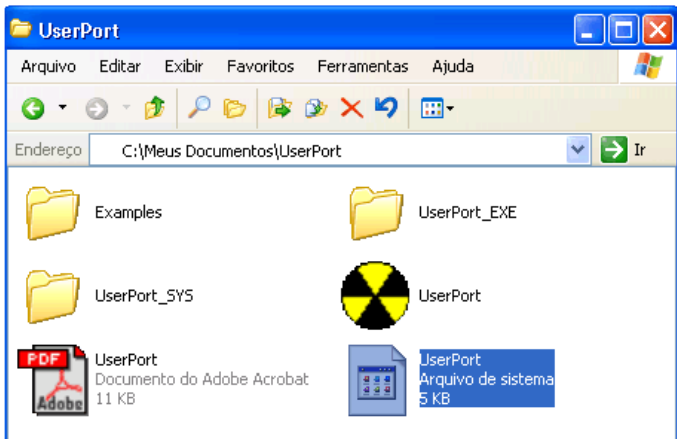


ACCESSING LPT PORT USING WRITELOG UNDER WINDOWS® XP

Log in an administrator account.

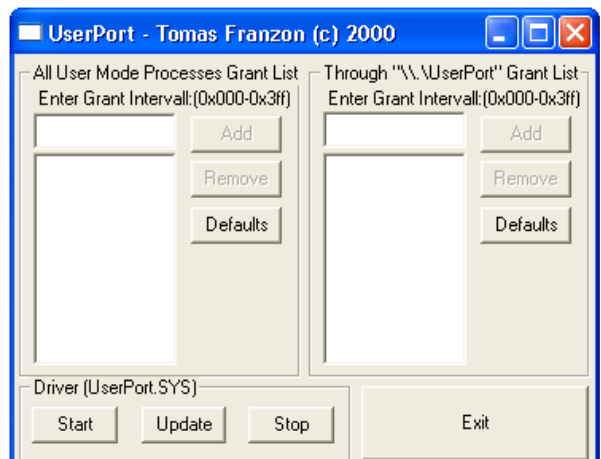
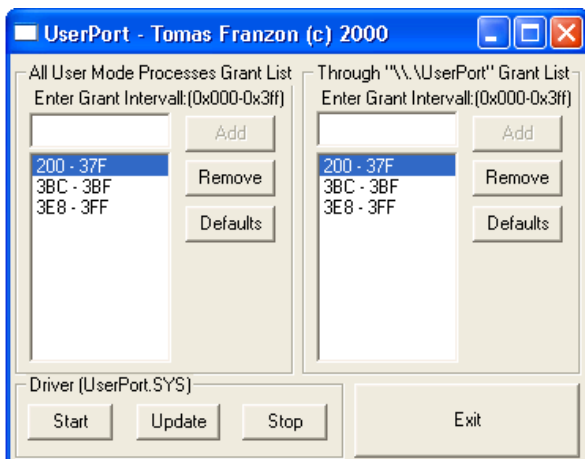
Unzip the "userport.zip" file and it will create a folder "UserPort".



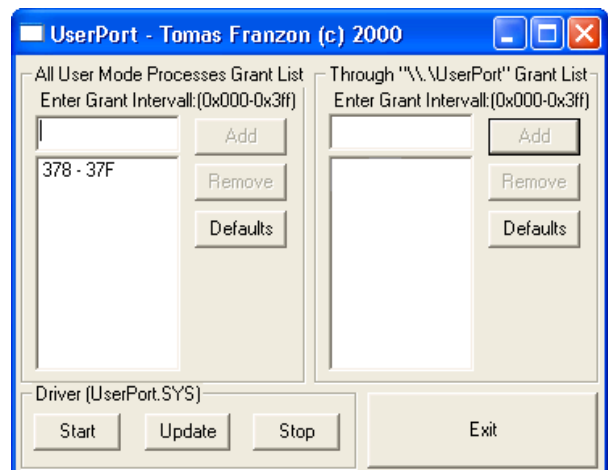
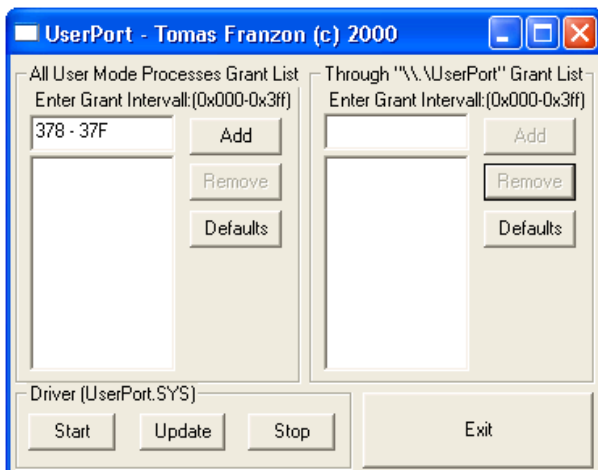
Inside of this folder (UserPort), there is a system file "UserPort" (UserPort.sys). Copy that file for the "C:\Windows\System32\Drivers" folder.

Return to the "UserPort" folder and then execute the "UserPort" program (yellow and black icon).

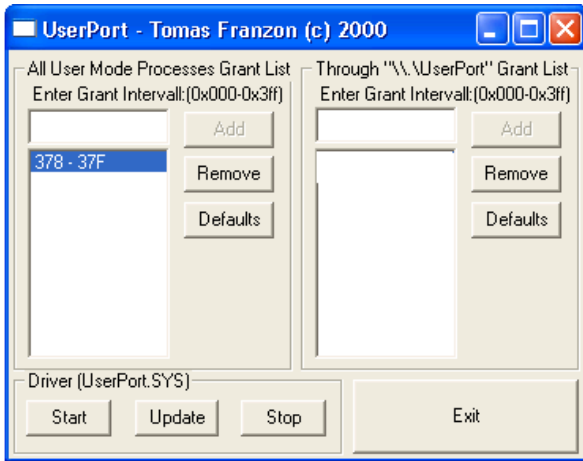
Select and remove the values found in the both columns.



Now in the first field, put the corresponding value of the LPT port of your computer (normally: **378 - 37F**), see note below. Click in "Add".



Select the added value (378 - 37F).



Click in "**Update**", "**Start**" and "**Exit**".

Restart the computer.

Now the LPT port will be ready to use, but if it continues inoperative, continue with the following steps:

• 1 •

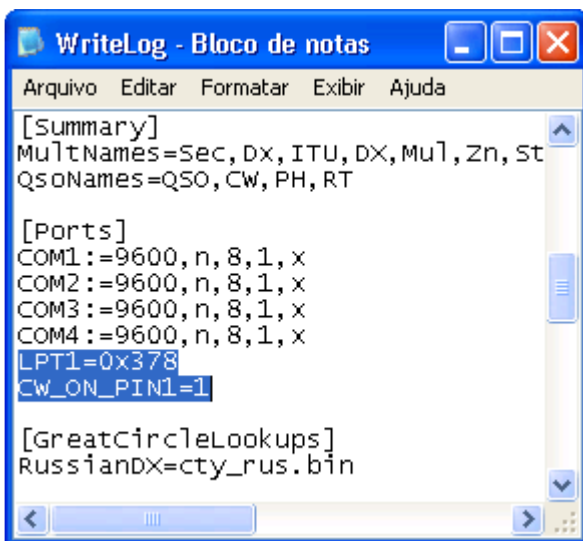
In the WriteLog folder installation (Former: C:\Ham\Programs), rename "fport16.exe" for "old_fport16.exe".

• 2 •

With the Notepad open the "writelog.ini", file located in the "C:\Windows" folder.

Go until the session **[PORTS]** and increase: "**LPT1=0x378**" (in the case of address of LPT1 different from 378-37F, alter the value "378").

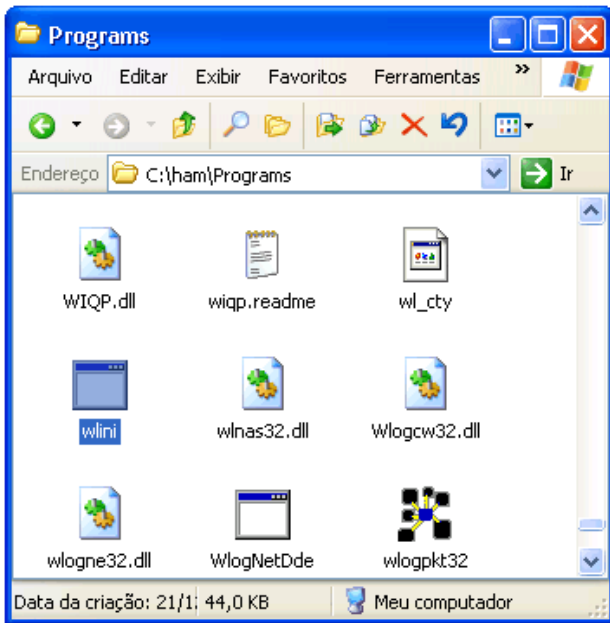
Still in the session **[PORTS]**, also increase the line "**CW_ON_PIN1=1**", save and close the Notepad.



• 3 •

Execute the "**wlini.exe**" program, located in the "C:\Ham\Programs" folder.

In the messages that appear, just click in "OK".



• 4 •

Restart the computer.

• 5•

Execute again the "wlni.exe", and after again click in "OK."

• 6•

Restart the Computer again.

Now the LPT port will be enabled for the use with WriteLog.

OBS:

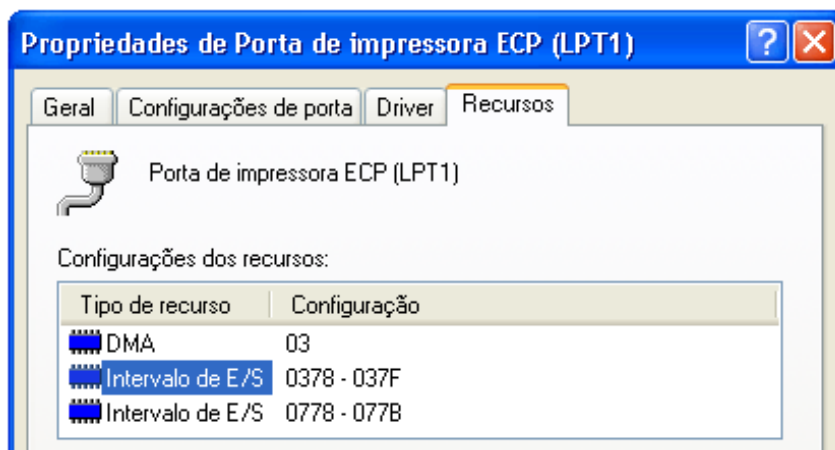
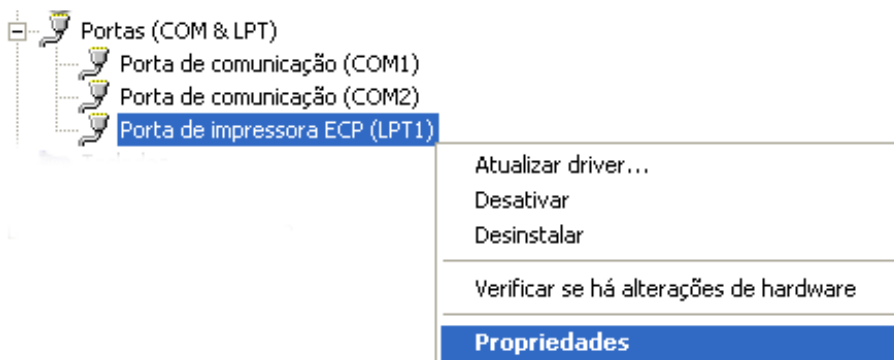
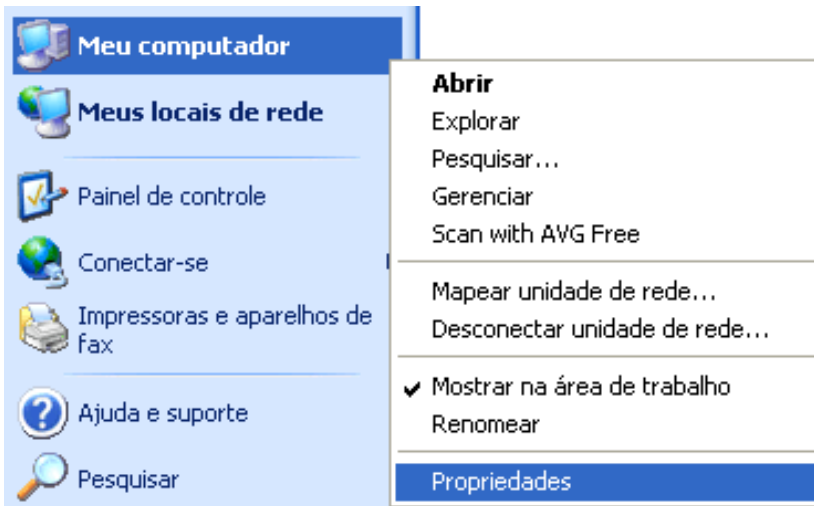
The userport.zip program can be found in the following addresses:

<http://www.py2eb.com.br/files/userport.zip>

NOTE: HOW TO FOUND THE LPT PORT ADDRESS

To know which the address of your computer follow the steps:

- Right click on "My Computer" and choice "Properties".
- In the "Hardware" tab, click in "Manager of Devices".
- To expand the device "Ports (COM & LPT)".
- Right click on "Printer port" and choice "Properties".
- In the "Resource" tab, write down the first "Interval of E/S".
- Later cancels and close.



English version
Collaboration: PYZY Xavier